

JSPS/SAC SEMINAR, MARCH 17-18, 2022: ON GAS KINETIC/DYNAMICS AND LIEF SCIENCE

Zoom link: <https://chalmers.zoom.us/j/69733567289>.

Password: 298679

Program

MARCH 17, 9:00-14:15 (Sweden)/17:00-22:15 (Japan)

Opening remarks

9.00-9.05– Director of JSPS Stockholm Office Dr. Tadaharu Tsumoto

9.05-9.10– Professor Bernt Wennberg

9.10-9.15– Professor Imre Pázsit

Presentations

Session 1, 9.15–10.30, (Chair: Professor Kazuo Aoki)

J1: 9.15-10.00– Professor Shigeru TAKATA: Plenary speaker (Kyoto Univ)

A further attempt on the simple kinetic modeling of a dense gas with phase changes.

J2: 10.00-10.30– Associate Professor, Kenta ISHIMOTO (RIMS Kyoto University),

Collective dynamics of microswimmers: multi-scale modelling via regularised Stokeslet representations.

10.30-10.40– Paus

Session 2, 10.40–12.10, (Chair: Professor Shigeru Takata)

J3: 10.40-11.10– Associate Professor Masahiro SUZUKI (Nagoya Inst of Tech)

The Kinetic and Hydrodynamic Bohm Criteria for Plasma Sheath Formation.

J4: 11.10-11.40– Professor Satoshi TAGUCHI, Graduate School of Informatics (Kyoto University)

Magnus effect in rarefied gas.

C1: 11.40-12:10– PhD student Leon Frischauf (University of Vienna)

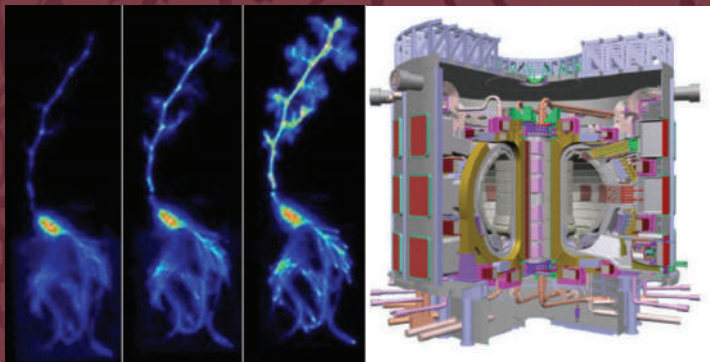
Truncated SVD for applications in microwave thermometry.

12.10-12.30– Paus

Session 3, 12.30–13.15, (Chair: Professor Imre Pázsit)

J5: 12.30-13.15 Professor Tomoko M. NAKANISHI, Plenary speaker (The University of Tokyo, Hoshi University)

Visualization of ^{14}C -labeled Gas Fixation in a Plant.



Session 4, 13.15–14.15, (Chair: Professor David Cohen)

C2: 13.15-13:45–Associate Professor Philip GERLEE (Chalmers)

Weak selection and time scale separation in ecological and evolutionary dynamics.

C3: 13:45-14:15– Professor Larisa BEILINA (Chalmers)

A domain decomposition finite element/finite difference method for permittivity reconstruction from time-dependent scattered data in conductive media.

MARCH 18, 9:00-12:35 (Sweden)/17:00-20:35 (Japan)

Session 5, 9.00–10.45, (Chair: Professor Adrian Muntean)

C4: 9:00-9.45–Professor Imre Pázsit, Plenary speaker (Chalmers)

The history and significance of the Klein-Nishina formula.

J6: 9.45-10.15– Associate Professor Shugo YASUDA (University of Hyogo)

Chemotactic aggregation of run-and-tumble bacteria.

J7: 10.15-10.45– Associate Professor Kosuke SUZUKI (Shinshu Univ)

Some attempts to reproduce the pitching attitude control of butterflies through immersed boundary-lattice Boltzmann simulations.

10.45-11.00– Paus

Session 6, 11.00–12.30, (Chair: Professor Serik Segatov)

C5: 11.00-11.30– Professor Petter MOSTAD (Chalmers)

Medical age assessment for legal purposes: An application of Bayesian inference and optimal decision theory.

C6: 11.30-12.00–Associate Professor Irina PETTERSSON (Chalmers)

Multiscale analysis of myelinated axons.

C7: 12.00-12.30– Professor Klas Modin (Chalmers)

Zeitlin's model for 2D hydrodynamics.

Final remarks & Closing

12.30-12.35–Professor Mohammad Asadzadeh

Organizers: JSPS Stockholm Office & Mathematical Sciences, Chalmers University of Technology and University of Gothenburg

Contact: mohammad@chalmers.se