

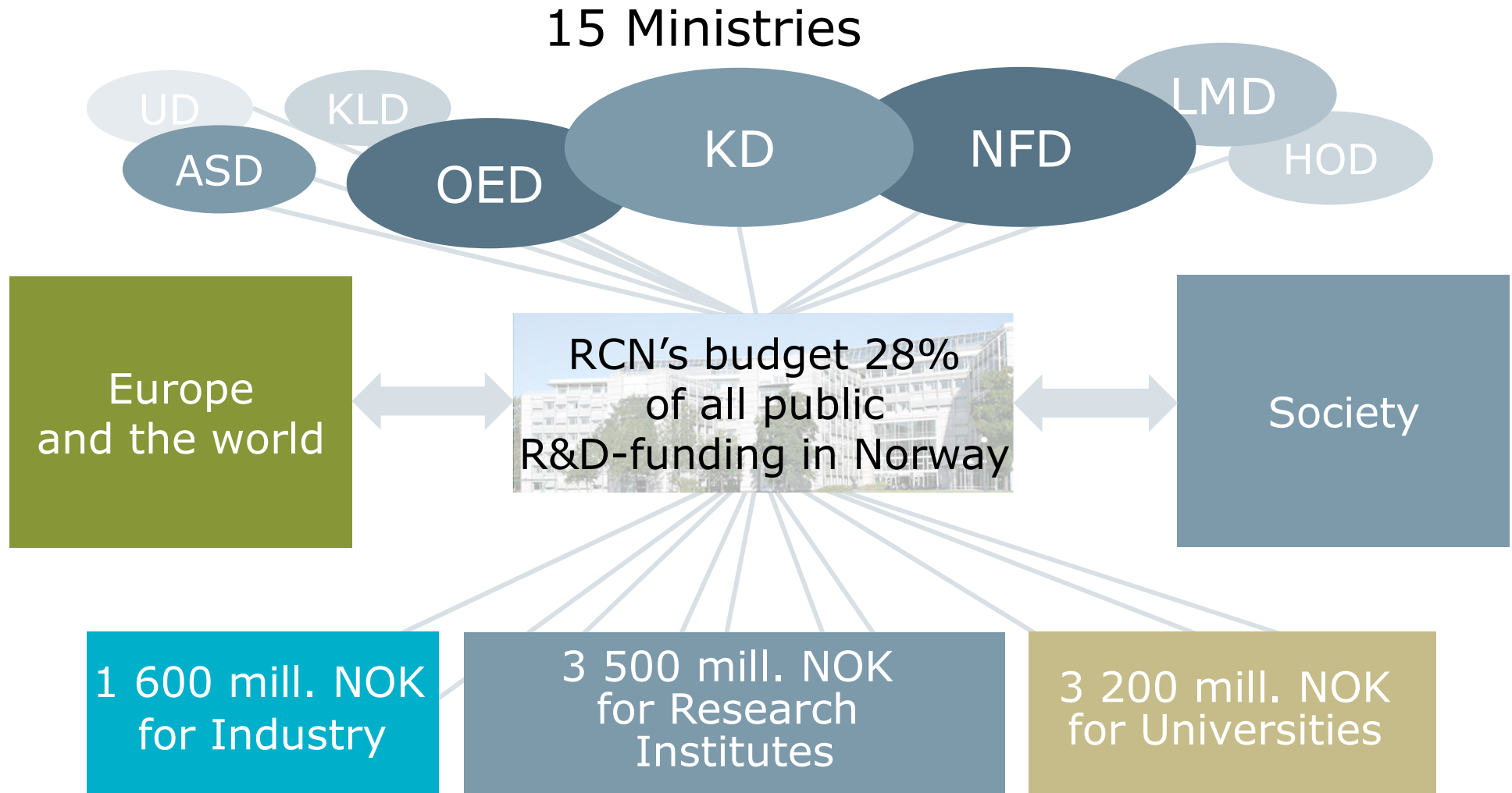
Cooperating with Japan in R&D

Julie Christiansen
Senior Adviser

Department for int. cooperation and development research



The Research Council in one slide..



Roadmap prioritized countries

- Brazil
- Canada
- India
- Japan
- China
- Russia
- South Africa
- USA



Kristin Danielsen
Internasjonal direktør.

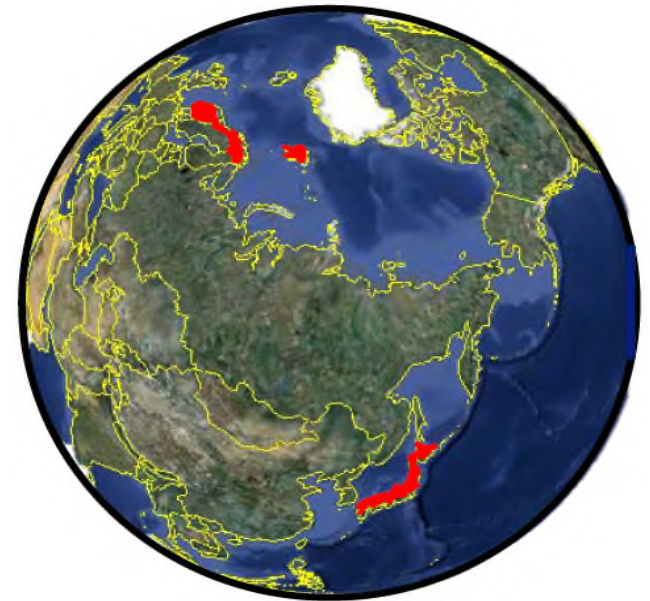
Bjørn Tore Kjellemo
Direktør, Utvikling og samarbeid

Why Japan?

- Japan's position as a **leading research nation**
- High quality, global contributor, business and industry
 - Large investments in R&D
 - Research intensive business and industry
 - Technology driver

Priority areas for cooperation:

- Polar research and space research
- Energy and Environment
- Marine research
- Material science – nano technology
- **2018: Health and welfare technology?**



RCN – What do we do?

International Cooperation is a high priority..

..and international cooperation will be awarded in project evaluation processes.



RCN – What do we do?

1. New scheme from 2017
Personal overseas research grant
 - PhD and PostDocs
 - 3-12 months
2. International **Partnership** for excellent Education and Research (INTPART)
 - Special emphasis is on integrating higher education- and research, and may include business partners.
3. Follow-up bilateral **research agreements**
 1. Advisor to Government –priorities and instruments
 2. Promotion of Norwegian research (Science Weeks, other events)
 3. Bilateral calls (China, India, Russia, South Africa, Latin America)

NORWAY-JAPAN MARINE SCIENCE WEEK 2014



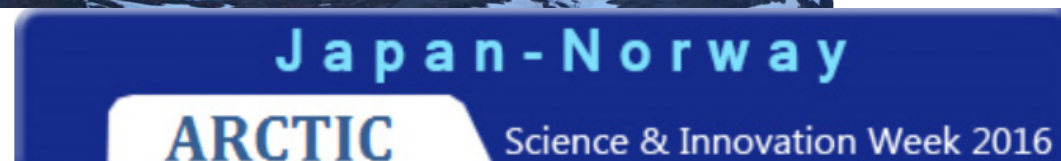
As two marine nations, Japan and Norway have an impressive joint activity portfolio within cooperation activities, the Norway-Japan Marine Science Week 2014 is made as an arena

Marine Science Week June 4, 2014

Energy Science Week
May 27, 28 2015



Arctic Science and Innovation Week
June 2-3, 2016



Japan-Norway Arctic Science & Innovation Week 2016, June 2-3 (Photo: Shutterstock)

INTPART - International Partnerships in Excellent Education and Research

- The main goal of INTPART is;
- to develop world class higher education and research institutions
- by promoting and funding long term institutional partnerships with strong academic groups and institutions
- in the eight prioritized countries; Brazil, Canada, China, India, Japan, Russia, South-Africa and the USA.
- 10 INTPART projects with 14 Japanese partners

Cross-institutional coordination /Team Norway



- Dedicated counsellor for science, technology **and higher education** in Tokyo
- NTNU and UiB: Special Adviser in Innovation Norway Tokyo office

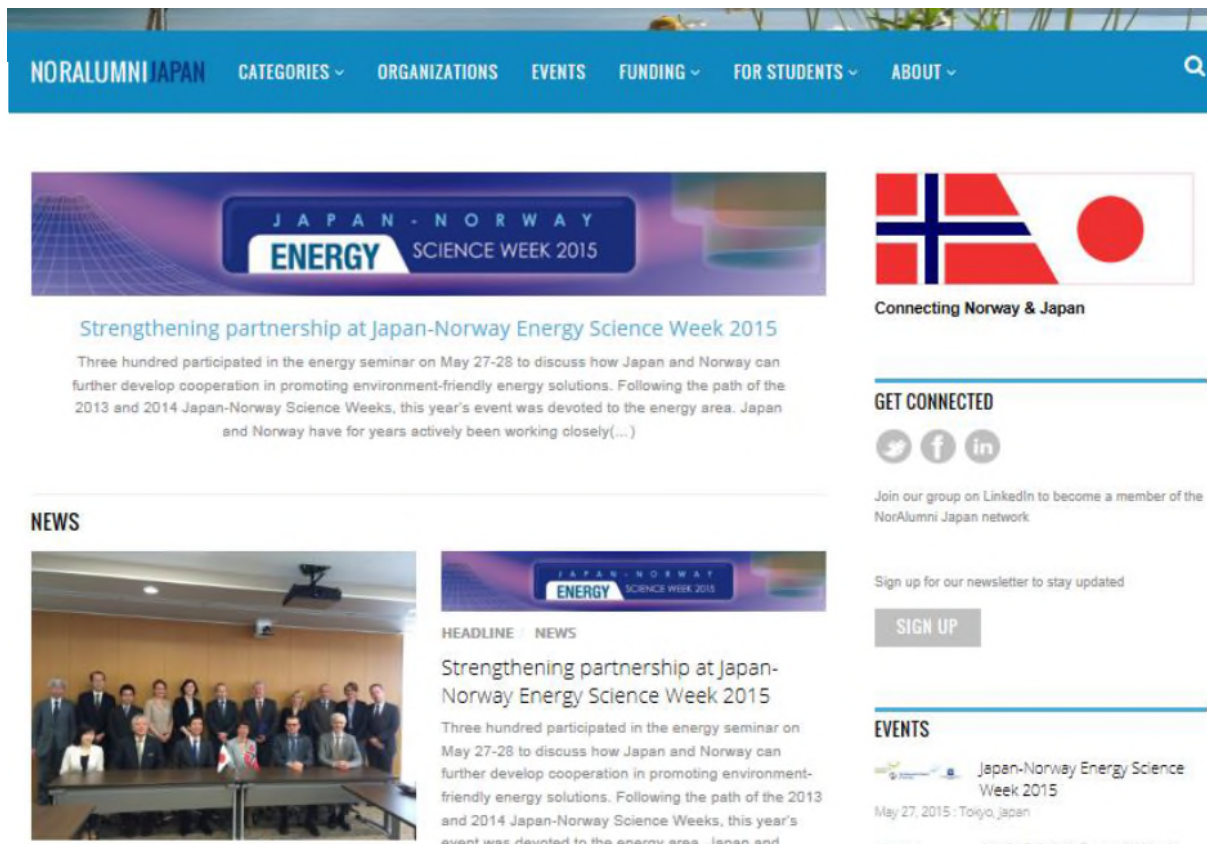


Building JPN-NOR knowledge networks

NorAlumni Japan



- Students
- Researchers
- Business partners



The screenshot shows the NorAlumni Japan website. The header is blue with the text 'NORALUMNI JAPAN' and navigation links: 'CATEGORIES', 'ORGANIZATIONS', 'EVENTS', 'FUNDING', 'FOR STUDENTS', and 'ABOUT'. A search icon is on the right. Below the header is a banner for 'JAPAN - NORWAY ENERGY SCIENCE WEEK 2015'. The main content area features a headline 'Strengthening partnership at Japan-Norway Energy Science Week 2015' with a sub-headline 'Connecting Norway & Japan'. The text describes a seminar on May 27-28 where 300 participants discussed energy solutions. To the right, there's a 'GET CONNECTED' section with social media icons for Twitter, Facebook, and LinkedIn, and a 'SIGN UP' button for a newsletter. Below this is an 'EVENTS' section listing 'Japan-Norway Energy Science Week 2015' on May 27, 2015, in Tokyo, Japan. At the bottom, there's a 'NEWS' section with a photo of a group of people and a headline 'Strengthening partnership at Japan-Norway Energy Science Week 2015'.

www.noralumni.no/japan/